



DAI ICHI BONSAI KAI

Serenity through Bonsai

第一分盆裁會
盆中平穩

MARCH 2017 | VOLUME 32, ISSUE 3

THE DAI ICHI GAZE



BONSAI-A-THON | REPOTTING SEASON

DAI ICHI BONSAI KAI

2017 BOARD OF DIRECTORS

John van de Wouw

President

Doyle Saito

1st Vice President

Program Chair

Past President

OPEN

2nd Vice President

CJ Harmatz

Corresponding Secretary

Membership

Treasurer

Judy Unrine

Recording Secretary

Historian

OPEN

Co-Show Chair

OPEN

Librarian

Kevin Sweeney

Benefit Drawing Chair

Jason Saito

Newsletter

Website

Social Media

OPEN

Hospitality

Tom Culton

Publicity

CLUB FOUNDERS

Leila Kusumi

Co-Founder | Sensei

Jim Tatsukawa

Co-Founder | Sensei



On the Cover

| Beautiful trees on display at the GSBF Bonsai-A-Thon. This year's show was curated by the Viet Bonsai Today Society.

Inside Cover

| There were many beautiful pots and bonsai material available at the Bonsai-A-thon sale area, such as this beautiful bronze sculpture offered by Nathan Simmons.

PRESIDENT'S MESSAGE

Cancelled due to rain! This is a first for Dai Ichi Bonsai Kai, I can't remember another time when we needed to cancel one of our monthly meetings due to mother nature. I was not in town, but I heard the winds and rain were unbelievable.



Our annual Dai Ichi Bonsai Kai Show & Sale is about a month and a half away. DIBK prides itself as an all inclusive club, and we welcome all members, no matter their skill level. All you have to do is express an interest. We will make sure that you have all you need to display your bonsai, including a "dai" (display table/stand). Our shows are wildly successful, well attended by the public, and include a beginners workshop taught by DIBK club members. Saturday night features a reception including a pot-luck dinner and entertainment, and several raffles. A Frank Goya sai-kei demo will be our Sunday afternoon highlight.

It's our members who make the show great, volunteering their time and knowledge. Please make sure that you participate!

I want to give a special shout-out to our DIBK members, who took it upon themselves to help out at the Golden State Bonsai Federation's Bonsai-A-Thon fundraiser last month at the Huntington Library. Barry Miller worked with the organizing committee to plan the event and fluted around both the sales and auction areas. Allan Sugimura, Jason Saito, Michael Izumoto, and Doyle Saito all participated as Sensei during the Saturday morning beginners workshop. Thanks for your support.

John van de Wouw

John van de Wouw
President
Dai Ichi Bonsai Kai

The Golden State Bonsai Federation's annual Bonsai-A-Thon has grown into one of Southern California's largest and most anticipated bonsai event, and this year's show was no exception. Attendance was brisk as enthusiasts gathered from all over to enjoy the demos, sales, auctions, raffles and exhibits. There were also beginning workshops for children and adults, which were both well attended. Many items from San Gabriel Nursery were offered for sale.

Bonsai-A-Thon continues to be a popular start to Southern California's bonsai show season. Let's take a look at the event.



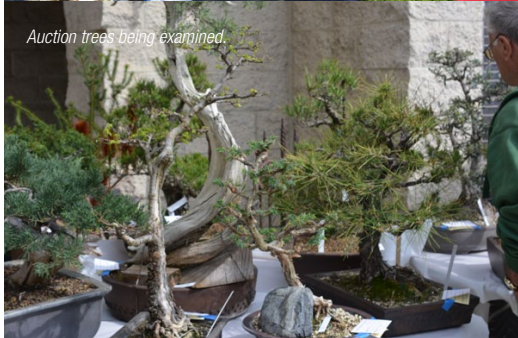
BONSAI-A-THON 2017



Mel Ikeda, Fred Miyahara, and Dennis Makashima talk shop.



Gary Lai brought a nice selection of trees for sale.



Auction trees being examined.



Barry Altshul had a great selection available.



Nathan Simmons brought out his best pots and material for sale in the vendor's area.





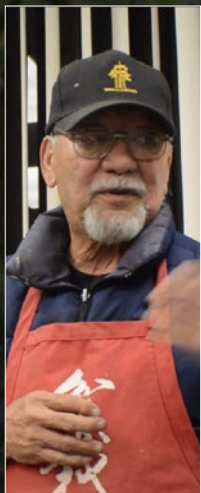
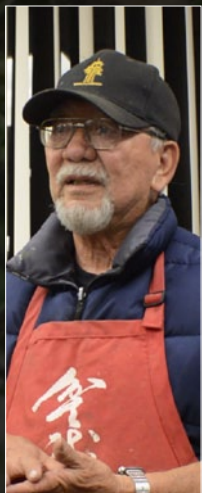
Kathy Benson's demo tree.

So many trees and pots were auctioned and raffled over the weekend event.









Fred Miyahara repotting article
reprinted from *the DIBK Gazette*, March 2015

**THE MARCH 17th, 2017 MEETING
WILL BE A REPOTTING WORKSHOP CONDUCTED
BY FRED MIYAHARA & MICHAEL SYKES.**

**BRING YOUR TREES, TOOLS AND SOIL AND
LET'S REPOT THOSE TREES!**

**"...these techniques work for us
and they work for people in Japan, and
they have trees that are
over 500 years old.
If it works for them, we should try
to emulate their techniques instead of
reinventing the wheel."**



FRED MIYAHARA

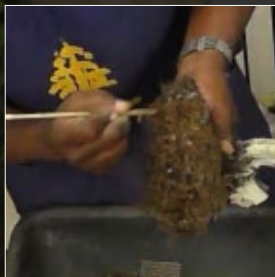
REPOTTING TECHNIQUES

As part of DIBK's ongoing educational mission, we were fortunate to have Fred Miyahara and Michael Sykes, demonstrate repotting techniques on established bonsai.

The demonstration started out with Fred discussing fundamentals and philosophy. Fred explained, "One thing we tend to do is overpot our trees. People notice that trees from Japan are usually in very small pots and by comparison, in Southern California, and perhaps even the entire US, we tend to use larger pots. My hypothesis is that at some point, people started using larger pots and were repotting less often. With larger pots and infrequent repotting, the roots tend to grow very long, so the fine feeder roots get cut too much. That's not how to keep a bonsai happy. I think the secret to healthy trees is to repot often. Deciduous trees should be repotted every year and no longer than two years. The roots grow out, you cut it back, keep repeating this and the tree stays alive and healthy for a hundred years."

According to Fred and Michael's teacher, Kenji Miyata, the most important thing in bonsai is watering. Fred explains, "This is probably true because in Japan, no apprentice can water until their third year. Apprentices may wire and prune, but must first learn how the tree's roots grow, before being allowed to take on the responsibility of watering. The second most important thing is repotting.

"Here, we tend to pay more attention to what is above the ground. In Japan, they concentrate on everything below the ground. If you take care of everything below the ground everything will take care of itself."



At this point, Fred let Michael masterfully demonstrate a repot of a grafted Kishu.

“Our first step is getting the tree out of the pot using sickles, saws, and other root pruning tools. It’s a very simple process that we use. We start combing out the top, to see where the viable roots are. You can’t cut the bottom until you know how much rootball you have on top. If you cut too much off the bottom and don’t have enough roots on top, you will have a problem, especially when putting it in a shallow pot. As

you comb through the roots, you shape the top into a conal pyramid. This allows water to easily drain down into the pot.

“When we repot, we do use a drainage layer. coarser soil on the bottom allows the roots to ‘air prune’ themselves, which leads to better drainage, which is beneficial for health and growth.

“If you look at the root system, it mirrors the top of the tree. We know how the top of the tree grows; the top branches are the strongest and most vigorous, the bottom branches are the

weakest. If you take the top part of the tree and turn it upside down, the root system mirrors the top of the tree. Meaning the roots on the bottom are the most vigorous, and the roots on the top, the weakest. It is exactly the same. You also want to take the biggest roots out of the bottom, because the fine feeder roots are what feeds the tree.

“You also want to tie the tree down well, because it’s critical as the rootball starts to grow, that the tree and the roots not move. If it moves, it will

break the newly formed roots, and that will set the growth back. While you can remove the wire after a year or so, I almost never cut my wire out. Only in fast growing deciduous and tropical trees, do I sometimes remove the wire; because the roots grow so fast, otherwise, I just leave them in until the next repot.”



Kishu grafted onto San Jose stock over 20 years ago. After repotting.



Fred's Soil Mix Recommendations

“I’ve switched from pumice to perlite as pumice tends to be powdery and it retains a lot of dust and turns to sludge. Perlite is sterile, clean, and leaves no dust.”

Pines

7 parts Akadama
2 parts Perlite
1 part Lava (Scoria)

Junipers

8 parts Akadama
2 parts Perlite or Pumice
1 part Lava (Scoria)

Deciduous

9 parts Akadama
2 parts Perlite

"To finish off the repot, we take fine sifted sphagnum moss, or very fine soil, and spread a thin layer over the tamped down topsoil. This holds moisture in as well as protecting the fine roots that are close to the surface. You can also mix bamboo charcoal dust into the top dressing. It must be organic and wood based. This helps filter the water, and also helps change the organic compound of the soil. There was a study in South America, where they found that in areas where wood was burned often, the soil was very rich and fertile. They determined this was due to the high charcoal content in the soil.

"After the repot, you can fertilize within two weeks if you use organic fertilizer. If you use chemical fertilizer, you must wait at least a month and a half. You need to be real careful with fertilizers.

"The first watering, you should run water over the soil until it runs clear through the bottom. This ensures that all of the fine soil and debris is gone.

"I'm just trying to teach you what we've learned, how we do things and what works for us. It is not gospel. All of these techniques work for us and they work for people in Japan, where they have trees that are over 500 years old. If it works for them, we should try to emulate their techniques instead of reinventing the wheel."

At this point, the club got some hands on experience by repotting a few trees Fred brought with him. With the guidance of the demonstrators, as well as senior club members, participants repotted these trees.

Thanks to Fred and Michael for making the long journey from San Diego, to generously educate our club members.

To see Fred Miyahara demonstrate grafting techniques, please check out Bonsai Artisans video:

<https://www.youtube.com/watch?v=bG1vZzEhn-w>



GET YOUR SHOW TREES READY!

All DIBK members are encouraged to show a tree in this year's show.

Start getting your best trees ready, and please send back the response card as soon as it arrives so we may facilitate the display planning.



**DAI ICHI
BONSAI KAI**

*Serenity
through
Bonsai*

32nd ANNUAL BONSAI EXHIBIT & SALE

May 6 and 7, 2017

Ken Nakaoka Community Center
1670 W. 162nd St., Gardena

SATURDAY • MAY 6

10:00am - 4:00pm

Show & Sales Area Open

10:30am

Beginner's Hands-on Workshop
(free tree to first 15 newcomers to sign up Saturday morning)

1:00pm

Round Robin Bonsai Demonstration

6:00pm

Reception & Entertainment

SUNDAY • MAY 7

10:00am - 3:00pm

Show & Sales Area Open

1:00pm

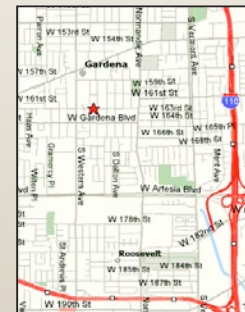
Mr. Frank Goya, Saikei Demonstration



Novice to master exhibitors, daily demonstrations and drawings, bonsai plants, tools, and accessories on sale throughout the show. Free admission and parking.

For more info, call Doyle Saito at
(310) 539-9265
or visit
daiichibonsaikai.com

Directions:
405 Freeway or Artesia Boulevard (91 Freeway) to Western Avenue. Western Avenue north to 162nd Street. Turn east (right) on 162nd Street to the Ken Nakaoka Community Center, located on the south side of 162nd Street at 1670 W. 162nd Street.



FACEBOOK
www.bit.ly/DIBK-FB



March 17, 2017

Fred Miyahara has become a master of many aspects of bonsai, especially in the area of grafting and the Japanese Black Pine. He has done thousands of grafts using Shimpaku scions onto San Jose Junipers, and Nishiki (cork bark), Mikawa and Awaji scions onto Black Pine stock.

Our March meeting will be a repotting workshop, so attendees are encouraged to bring a tree or two, along with soil, tools and enthusiasm. There will also be a few trees available to repot, for members who do not bring trees.

Topics to be covered are: root trimming, pot selection, soil components, building better nebari (surface roots), rootball reduction, root types, properly securing tree to pot, aftercare, and much more!

UPCOMING

All events are tentative and subject to change.

APRIL 21, 2017
NATHAN SIMMONS
Tree & Pot Selection

MAY 2017
NO MEETING
CLUB SHOW & SALE

EVENTS

March 25 – 26, 2017 2017 California Bonsai Society Show

The Huntington
1151 Oxford Road, San Marino
Hours: 10:00 AM – 4:30 PM
CBS will be conducting their annual show at the Huntington Library on March 25-26, 2017. A show that usually has some spectacular trees. This is the grand daddy of all clubs in Southern California..

March 26, 2017 LA Community Bonsai Swap Meet

Jesse Owens Park
7100 White Oak Ave. Reseda
Hours: 10:00 AM – 3:00 PM
Come out and enjoy a day of buying, selling or swapping bonsai trees, tools, pots and paraphernalia with the Los Angeles bonsai community. EVERYBODY is welcome and there is no charge to attend or to participate.

For more information, please visit
www.facebook.com/groups/983584171671710/

April 29 – 30, 2017 San Diego Bonsai Exhibition

Casa Del Prado, Room 101
Balboa Park
Hours: 10:00 AM – 5:00 PM
Demonstrations at 11 AM and 1 PM. Free admission. Bonsai pots and trees for sale, as well as other bonsai-related items.

For more information visit
www.sandiegobonsaiclub.com

April 22 – May 14, 2017 Bonsai Exhibit at The Fullerton Arboretum

1900 Associated Road, Fullerton
Hours: 10:00 AM – 4:00 PM
Weekends Only

The exhibit will be staged with participating clubs and individuals, cycling their trees throughout the event. Demonstrations to be announced.

For more information, please visit
www.fullertonarboretum.org

For more event information, please visit
bit.ly/GSBF-MoreEvents

GRATITUDE

*Thank you to all of the members who contributed.
The club truly appreciates your generosity and giving spirit.*

Refreshment Signup for March

John van de Wouw, CJ & Mark Levinstein



Please remember to sign the contribution sheet so that we may acknowledge your generosity.

Special thanks to

GSBF, Huntington Botanical Garden, Fred Miyahara, and Michael Sykes
for their contributions to this issue of the DIBK Gazette.

ABOUT DAI ICHI BONSAI KAI

Dai Ichi Bonsai Kai ("Number One" Bonsai Club) was established in January, 1986.

Our club is dedicated to promoting the art of bonsai, and takes great pride in its family-oriented character.

The club meets on the third Friday of each month at the Ken Nakaoka Community Center, 1670 W. 162nd St., Gardena, at 7:00 P.M. Each meeting features a bonsai demonstration, benefit drawing and the public is welcome.

www.daiichibonsaikai.com

***Please feel free to forward this publication to friends, family
or anyone with an appreciation for bonsai.***

Do you have any comments, questions, or submissions? If so, please contact:
Jason Saito ph 310.909.4598 | email jason@zenpalace.com