



DAI ICHI BONSAI KAI

Serenity through Bonsai

第一分盆栽會
盆中平穩



Photo by Barry Miller

DAI ICHI BONSAI KAI

2019 BOARD OF DIRECTORS

Jason Saito

President

Newsletter / Website / Social Media

Doyle Saito

1st Vice President

Program Chair

Robert King

2nd Vice President

John van de Wouw

Show Chair

Past President

CJ Levinstein

Membership Chair

Treasurer

Joan Shiozaki

Corresponding Secretary

Judy Unrine

Recording Secretary

Historian

Shirley Floresca

Fundraising Chair

Carol Takahashi

Librarian

Kevin Sweeney

Benefit Drawing Chair

Barry Miller

Hospitality

Club Photographer

Dan Sawada

Publicity

CLUB FOUNDERS

Leila Kusumi

Co-Founder | Sensei

Jim Tatsukawa

Co-Founder | Sensei



PRESIDENT'S MESSAGE

Our July meeting with Bjorn Bjorholm was a phenomenal success and was well attended by DIBK members and friends from throughout Southern California. The demo was insightful, lively, in-depth and most of all, informative. If you missed it, check out our coverage of the event in this issue, then go watch the live stream, which is archived in it's entirety, on our Facebook video page.

And speaking of videos, Bjorn's live stream has become our highest viewed and most shared video to date! As of today, it has over 4000 en-

gagements with almost 20,000 people reached, shared 170 times and over 9,000 views. That's kinda like having 9,000 people just show up for a demo/meeting. Wowza. We'll need more sandwiches. The results truly justify the efforts in fulfilling our primary mission, which is to share the art, love, passion, and knowledge of bonsai.

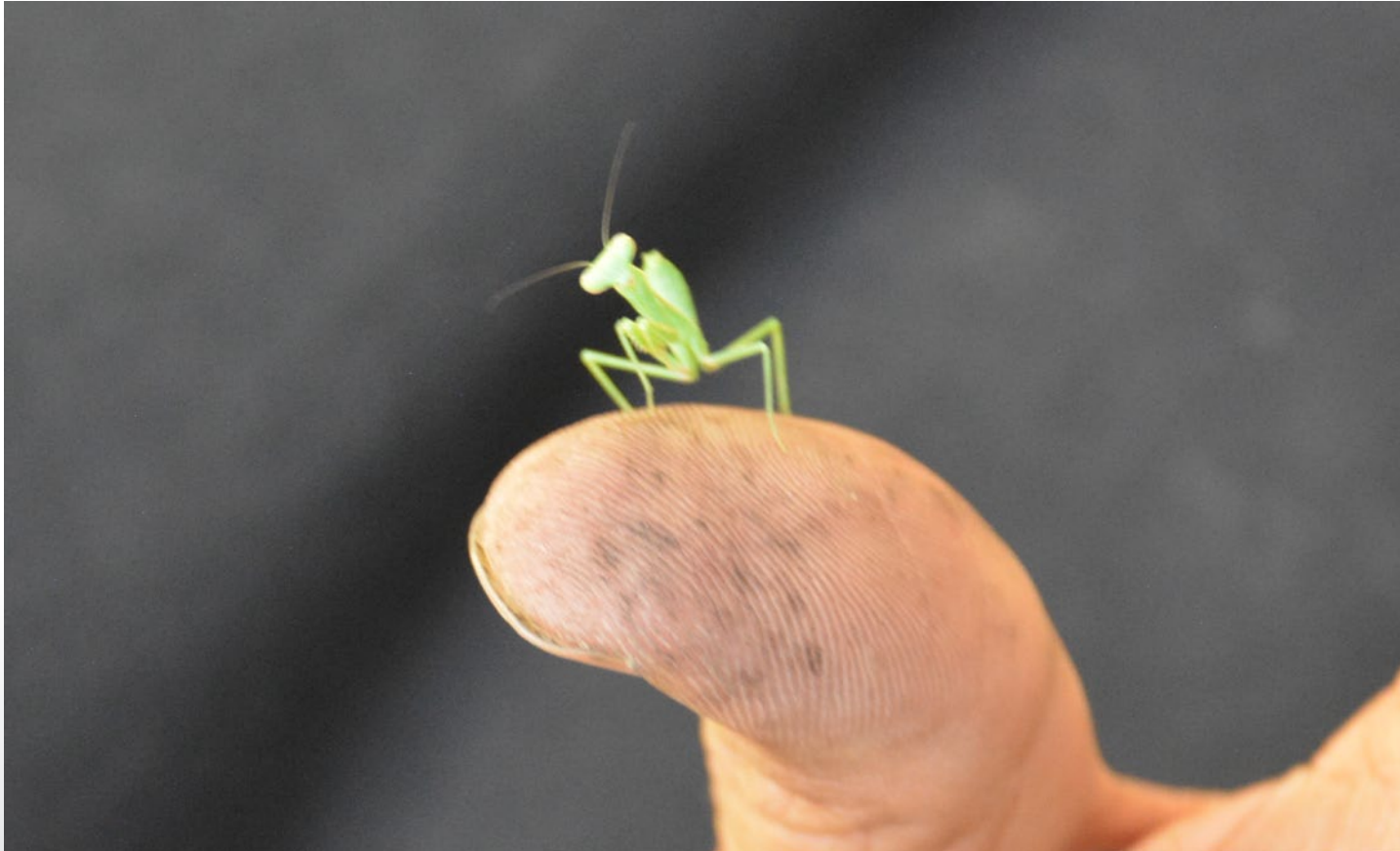
Our August presenter will be John Wang. John apprenticed at Mansei-En, and has taught, headlined and demonstrated at conventions throughout the world. It will be a critique, with the emphasis on

"kaizen" or continuous improvement as it pertains to bonsai. Attendees should bring in any material they would like guidance on, and a different perspective regarding their styling and development.

Our next member workshop will be in Torrance on Saturday the 17th. Please RSVP with Doyle to reserve your spot.

Live. Love. Grow.

Jason Saito
Jason Saito



We had an unexpected, silent observer at the Bjorn Bjorholm workshop.
While he was pretty silent, he kept borrowing Gabe's tools, and he ate most of the chips. So rude.

** No insects were harmed during the workshop. Our guest was kindly escorted into the garden. We even gave him a sandwich.*

ANNUAL CLUB MEMBERSHIP

Individual Membership
\$25.00 per year

Family Membership
\$35.00 per year

Your dues enable the club to present activities such as our annual show, guest demonstrations, workshops, the *Dai Ichi Gazette*, club library, as well as refreshments and club raffles and events.

You can pay your dues in person at the next club meeting, or by mailing your check to:

CJ Levinstein
827 East Marshall Place
Long Beach, CA 90807

Or pay online via PayPal:
daiichibonsaikai.com/membership



IN THIS ISSUE

4
BJORN BJORHOLM
A Natural Bjorn Artist

11
BJORN BJORHOLM
Workshop Coverage

14
BJORN BJORHOLM
Social Media

A Natural Bjorn artist.

Photos by Barry Miller



We live in exciting times, at least where bonsai is concerned. With so much information freely available on the internet, a wider audience is now being exposed to quality bonsai. Leading the pack are a few amazing instructors and artists, who were trained in Japan and are freely sharing their knowledge and talent with the rest of the world. By doing so, they not only impart wisdom to the individual, but they also serve the greater purpose of raising the bar for world class bonsai throughout the community. In July, Dai Ichi Bonsai Kai was fortunate to have one such artist as our featured demonstrator.

Bjorn Bjorholm spent six years as an apprentice under Master Keiichi Fujikawa at *Kouka-en* bonsai nursery in Osaka, and was the first foreign-born working bonsai professional in Japan. Bjorn's work has been featured in the *Kokufu-ten*, *Sakufu-ten*, and *Taikan-ten* exhibitions, among many others.

In addition to operating his bonsai nursery and school, *Eisei-En*, Bjorn travels the world, from Europe to Asia to Latin America, teaching and providing services to private clients and international organizations.

And if that wasn't enough, Bjorn also spends his time creating videos and vlogs for his YouTube channel, as well as posting regularly on his various social media pages, making him one of the most well known and respected American bonsai artists around.



“Bunjin style has been around for a very long time. *bunjin* translates to ‘literati,’ a ‘literate person,’ or a ‘learned person.’ During the Edo period (1603-1868), anything that was labeled *bunjin*, whether it were a tree or other object, meant that it was something a learned person liked. In bonsai culture, that could have been a formal upright tree; it wasn’t a specific style of tree necessarily. What we think of nowadays as *bunjin* style is a slender, elongated trunk with most of the foliage starting at the top and flowing downwards. That modern notion, or what we now know as *bunjin*, came about in the Meiji period (1868-1912). With contemporary *bunjin* style, there’s a lot more movement, but the concept is the same. As a classical *bunjin*, this tree lends itself well because of the old bark, almost no taper, very little movement in the trunk and a lot of the branches emanate from the top.”



For the demonstration Bjorn chose a very old Japanese Black Pine that was developed in the 70's, then planted in the ground until it was dug up and repotted in 2013. It possessed a full canopy with most of its branches emanating from the upper half of the tree, which gave Bjorn a clear path to what the tree wanted to be. A classic *bunjin*.

He started the demo by assessing the tree and finding its most desirable front.

"I typically start at the base of the tree and work my way to the top. I look at the primary lines of the trunk and the primary lines of the branching, and build the basic structure from there.

"Since this tree has been growing in-ground, it's considered a *yamadori*, and you generally don't find *yamadori* with perfectly distributed radial *nebari* structure. This tree has a nice flared *nebari* that helps to lend itself well to a nice classical *bunjin*."

Bjorn picked up the branch cutter and, in less than 20 seconds, eliminated 70% of the tree's foliage.

The audience gasped.

"They asked me before I started if I was going to be able to finish this tree in 2 hours and I told them yes. And this is why."





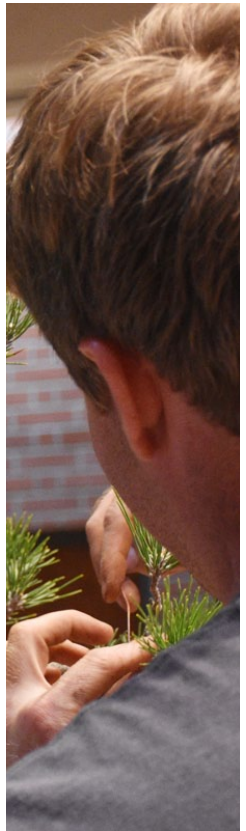
BJORN BJORHOLM DEMO



"When you're creating a *bunjin* style tree, there's usually very little deadwood. Particularly with *shari* but also in terms of *jin* on the tree. What I'll do is cut the necessary branches long, and evaluate the overall design as we go. As we style the tree, we'll shorten the branches as necessary. As a general rule, the whole point of *bunjin* style is, for the most part, to be understated. Loud *jins* and loud pieces of deadwood tend to take away from the overall design. That being said, leaving the branches longer than needed leaves us options for a nice *jin* or deadwood feature."

Bjorn is a fantastic presenter who understands completely the stylistic and horticultural aspects of creating world class bonsai. He takes Japanese bonsai philosophy and, utilizing a more Western approach to teaching, presents that information in a clear and logical way that anyone can understand.

If you missed it, you can check out his full demonstration on the DIBK Facebook page.



BJORN BJORHOLM DEMO



(Above) In attendance was CBS Visiting Artist Liliana Marcella Tello Ortiz. (Left) Liliana, along with Jaime Chavarria and Gabe Gonzales, assisted Bjorn in decandling the demo JBP.



What comes around... well... sometimes comes back around again. The lucky raffle winner of the demonstration tree was Doyle Saito (who provided the tree for Bjorn to style in the first place). Congratulations Doyle!

The tree is in good hands, and we'll share the progress updates in future issues of the *DIBK Gazette*.


Dai Ichi Bonsai Kai was live — with Bjorn BJORHOLM.

Published by Jason Saito · July 19 at 7:08 PM ·

BJORN BJORHOLM - JAPANESE BLACK PINE STYLING DEMO



19,851
People Reached

4,037
Engagements

Boost Post




 152

45 Comments 171 Shares 9K Views

Watch Bjorn's full demo at
<https://www.facebook.com/DailchiBonsai/videos/>





<http://www.bjornbjorholm.com/vlog-full-catalogue-date/>

“

***“I like the Chinese description
of bunjin/literati...”***

“The tree that is a brush stroke’.”

~ Kathy Benson

”

M
O
R
E

O
N

B
U
N
J
I
N

!



John Naka wrote an article titled, “Characteristics of Bunjin Style” which was published in the Golden Statements Magazine (March/April 1993). In this article about Literati, John made some interesting definitions of the style:

- It has shape or form but there is no definite pattern.
- It has no pattern, it is irregular and seems disfigured.
- It is like food that has no taste at the beginning but the more you chew the more flavor comes out. When you first look at bunjin style there is nothing exciting about it, it is so skimpy and lonely. But the more you observe it the more the tree quality and natural traits will come out. You will feel something from inside of your mind, and not only through the surface eyes.
- It looks like it is struggling for its survival, or a form of agony. The tree itself should not be in this condition, in reality it should be healthy. The shape or form may indicate struggle but not health. It seems to be a very cruel method but it is only concept. Its appearance should not be too serious nor easy, it should be free, unconstrained, witty, clever, humorous and unconventional. A good example for this is a study of any of nature's tree that has survived some sort of problem or disaster.
- To avoid uselessness, the ultimate final form or shape is a very important technique.
- It should portray a simple abstract painting, Senryu, Haiku, poem, music and song.
- Shape or form is from wind, weather, not too rugged but more graceful.

http://www.artofbonsai.org/feature_articles/literati.php

John Naka photo courtesy of Cheryl Manning.

DIBK MASTERS SERIES WORKSHOP

BJORN BJORHOLM



Before the demo, Bjorn spent the day with DIBK members providing expert styling advice for attendee's trees.

Attending the workshop was Mark Levinstein, Dave Hazard, Fred Miyahara, Jaime Chavarria, Sean Stanton, Shirley Floresca, Barry Miller, Hank Fawcett and Gabe Gonzalez.

They were motivated and inspired as Bjorn showed them techniques and directions, and guided them through the execution of the final vision of each tree. In the end, the class was all smiles as they took home some really nice trees.







Watch Bjorn style Gabe's California Juniper at
<https://www.facebook.com/DailchiBonsai/videos/>

MORE BJORN BJORHOLM

For up to date information and antics from Bjorn, visit/like/subscribe to his social media:

web: <http://www.bjornbjorholm.com> • <http://www.eisei-en.com>

insta: <https://www.instagram.com/eiseienbonsai>

youtube: <https://www.youtube.com/c/BjorvalaBonsaiStudio>



Eisei-en
WWW.EISEI-EN.COM

[Garden](#) [School](#) [Services](#) [Japan Tours](#) [Merch](#) [Contact](#) [Blog](#)


Eisei-en
WWW.EISEI-EN.COM



Eisei-en
WWW.EISEI-EN.COM

[Garden](#) [School](#) [Services](#) [Japan Tours](#) [Merch](#) [Contact](#) [Blog](#)

Eisei-en Bonsai Garden




Eisei-en 永青園

Eisei-en is the oldest and largest bonsai nursery and school in the Pacific Rim, having been founded in 1948 by the late Mr. Eisei Enomoto. The garden is more than just a nursery, it is a place where you can learn about the art of bonsai and the history of the Japanese garden. It is a place where you can see the most beautiful bonsai in the world, and where you can learn from the best. Eisei-en is a place where you can see the most beautiful bonsai in the world, and where you can learn from the best. Eisei-en is a place where you can see the most beautiful bonsai in the world, and where you can learn from the best.

What's in a Name?

The name, Eisei-en, is an abbreviation for the garden's full name, Eisei-en Bonsai Garden. The name is in Japanese, and it means "Eisei-en is a place where you can see the most beautiful bonsai in the world, and where you can learn from the best." The name is in Japanese, and it means "Eisei-en is a place where you can see the most beautiful bonsai in the world, and where you can learn from the best." The name is in Japanese, and it means "Eisei-en is a place where you can see the most beautiful bonsai in the world, and where you can learn from the best."




Come Visit the Garden

Eisei-en is open to the public every day, from 10:00 AM to 5:00 PM. The garden is located in the heart of the city, and it is a place where you can see the most beautiful bonsai in the world, and where you can learn from the best. Eisei-en is a place where you can see the most beautiful bonsai in the world, and where you can learn from the best. Eisei-en is a place where you can see the most beautiful bonsai in the world, and where you can learn from the best.

Owner Profile

Eisei-en is owned and operated by Mr. Eisei Enomoto, who is a master bonsai artist and a member of the Japanese Bonsai Association. He has been growing bonsai for over 50 years, and he is a member of the Japanese Bonsai Association. He has been growing bonsai for over 50 years, and he is a member of the Japanese Bonsai Association. He has been growing bonsai for over 50 years, and he is a member of the Japanese Bonsai Association.



Eisei-en
WWW.EISEI-EN.COM

Newsletter
Subscribe to our bi-monthly newsletter

Social Media
[Facebook](#) [Twitter](#) [Instagram](#) [YouTube](#)



Eisei-en Bonsai

Subscribed 68,522

Home Videos Playlists Community Channels About

Eisei-en Bonsai Garden Expansion!
Eisei-en Bonsai
1 month ago • 19,306 views
We've been working hard to expand Eisei-en Bonsai Garden, hence the delayed vlog upload! Thank you for your support as we continue to grow.

Vlogs
Check out my bonsai vlogs about life in Japan and on the road!

Eisei-en Bonsai Garden Expansion!
Eisei-en Bonsai
19,306 views • 1 month ago

They Took My Organs in Japan!
Eisei-en Bonsai
27,502 views • 4 months ago

\$1 Million BONSAI?! • Clickbait Warning!!
Eisei-en Bonsai
33,826 views • 6 months ago

Bonsai and Shinto | The Roots of the Art
Eisei-en Bonsai
18,578 views • 6 months ago

YAKISUGI
Eisei-en Bonsai
33,022 views • 8 months ago



eiseienbonsai Follow

1,177 posts 28.3k followers 294 following

Eisei-en Bonsai
Eisei-en Bonsai Garden, owned by Bjorn L BJORHOLM, is located in Nashville, TN.
www.bjornbjorholm.com/intensive-bonsai-courses
Followed by yest22, californiabonsaisociety, kimurabonsai + 1 more

POSTS TAGGED



DAI ICHI BONSAI KAI

SHOW YOUR DIBK COLORS



T-SHIRTS
\$15.00



APRONS
\$25.00

T-shirts are Glidden Ultra Cotton T-Shirts 2000 and available in men's size S, M, L, XL, XXL.
Aprons are one size fits all with adjustable neck strap and three pockets.

Pictures shown are for illustration purposes only. Actual products may vary.

AVAILABLE FOR PURCHASE AT OUR CLUB MEETINGS.
ONLINE ORDERING COMING SOON!

BACK ISSUES

<http://www.daiichibonsaikai.com/newsletters/newsletters-back-issues/>





JOHN WANG

KAIZEN/BONSAI IMPROVEMENT EVENT

BRING YOUR TREES!

AUGUST 16th, 2019

At our next meeting, we will have a very special evening with John Wang on the topic of *Kaizen* (Japanese philosophy of continuous improvement) as it pertains to bonsai. **Attendees are encouraged to bring in their trees** and, utilizing digital technology, John will illustrate his thoughts and ideas regarding the various styling options.

John apprenticed at *Mansei-En*, and has taught, headlined and demonstrated at conventions throughout the world. It will be a great event!

UPCOMING

All events are tentative and subject to change.

SEPTEMBER 2019 | **PAUL MINERICH**

Bougainvillea Styling

OCTOBER 2019 | **BONSAI BINGO/POTLUCK**

Annual Club Party

NOVEMBER 2019 | **TOOD SCHLAER (CO)**

*Bonsai Styling Demo
Masters Series Workshop*

EVENTS

August 29 – Sept. 1, 2019

Kofu Bonsai Kai

2019 Bonsai Fest at the Bowers

John M. Lee Court, 2002 N. Main St.

Hours: 10:00 AM – 4:00 PM daily

Featuring bonsai trees of the members of Kofu Bonsai Kai and special presentations Free Admission to bonsai area.

For more information visit

www.kofukai.org

September 21 – 22, 2019

San Diego Bonsai Club

2019 Fall Bonsai Exhibition

Casa del Prado, Room 101, Balboa Park

Hours: 10:00 AM – 5:00 PM daily

Featuring demonstrations at 11 AM and 1 PM.

Free Admission. Bonsai pots and trees for sale.

For more information visit

www.sandiegobonsaclub.com

October 24-27, 2019

GSBF Convention 42

Riverside - “Bonsai Forever”

Riverside Convention Center

Hours: 10:00 AM – 5:00 PM daily

Taiga Urushibata, Enrique Castano and Ryan Bell will headline.

For convention, workshop, seminar, excursion info, and to register, visit

www.gsbconvention.org

For more event information, please visit

bit.ly/GSBF-MoreEvents

GRATITUDE

*Thank you to all of the members who contributed.
The club truly appreciates your generosity and giving spirit.*

Benefit Drawing Contributors

Doyle Saito, Tyler Ferrar,
Shirley Floresca,
Mike Bell, Tom Vuong

Refreshment Contributors

Hoa Nguyen, David Hazard, Joan Shiosaki, Mark Williams,
Gib & Elissa Hoxie, Joe Stassi, Tom & Hanna Vuong,
Debra Mauzy-Melitz, Robert Hoocheveen, Fred Floresca,
Louis Carrillo, Jason Saito, Allan Sugimura

Refreshment Signup for August

Please feel free to bring any yummy treats you desire. See you there!

Please remember to sign the contribution sheet so that we may acknowledge your generosity.

New Members

Welcome, Fernando Hernandez, Joseph Hernandez, Jesus Hernandez,
Vic Zentil, Lisa Kashiya, Connie Jara!

Special thanks to

Bjorn Bjorholm, Art of Bonsai, Cheryl Manning
for their contributions to this issue of the DIBK Gazette.

ABOUT DAI ICHI BONSAI KAI

Dai Ichi Bonsai Kai (“Number One” Bonsai Club) was established in January, 1986.

Our club is dedicated to promoting the art of bonsai, and takes great pride in its family-oriented character.

The club meets on the third Friday of each month at the Ken Nakaoka Community Center, 1670 W. 162nd St., Gardena, at 7:00 P.M. Each meeting features a bonsai demonstration, benefit drawing and the public is welcome.

www.daiichibonsaikai.com

***Please feel free to forward this publication to friends, family
or anyone with an appreciation for bonsai.***

Do you have any comments, questions, or submissions? If so, please contact:

Jason Saito ph 310.909.4598 | email jason@zenpalace.com