



DAI ICHI BONSAI KAI

*Serenity through Bonsai*

第一盆裁會  
盆中平穩

NOVEMBER 2019 | VOLUME 34, ISSUE 11

# THE DAI ICHI GAZETTE



*Happy Holidays*

From  
The DIBK Family



# DAI ICHI BONSAI KAI

2019 BOARD OF DIRECTORS

## **Jason Saito**

*President*

*Newsletter / Website / Social Media*

## **Doyle Saito**

*1st Vice President*

*Program Chair*

## **Robert King**

*2nd Vice President*

## **John van de Wouw**

*Show Chair*

*Past President*

## **CJ Levinstein**

*Membership Chair*

*Treasurer*

## **Joan Shiozaki**

*Corresponding Secretary*

## **Judy Unrine**

*Recording Secretary*

*Historian*

## **Shirley Floresca**

*Fundraising Chair*

## **Carol Takahashi**

*Librarian*

## **Kevin Sweeney**

*Benefit Drawing Chair*

## **Barry Miller**

*Hospitality*

*Club Photographer*

## **Dan Sawada**

*Publicity*

## CLUB FOUNDERS

### **Leila Kusumi**

*Co-Founder | Sensei*

### **Jim Tatsukawa**

*Co-Founder | Sensei*



## PRESIDENT'S MESSAGE

Last month's annual club potluck/bonsai bingo was a lot of fun. Everyone brought in some really incredible dishes to share and we all ate way too much! The generosity of our DIBK family was also evident as you looked at the many donations of great bonsai treasures that lined the stage. I want to personally thank everyone for sharing, and enjoying the evening with us.

We still have open spots for both the Todd Schlafer and Jan Culek workshops. These are fantastic opportunities to get styling advice and

tips from two world class artists. Don't miss out - RSVP with Doyle to reserve your seat.

The Sunday following Thanksgiving (Dec 1) is the annual CBS members sale at Yamaguchi Bonsai Nursery in West LA. An annual tradition, the CBS sale is an opportunity to pick up some great material at great prices.

Due to the upcoming Masters Series workshops, there will be no members workshop in November or December. However, if there's enough interest however, we will pick up the workshop in December.

If you want to attend, please let Doyle know and we can schedule one.

See you at the next meeting!

Live. Love. Grow.

Jason Saito





## 17th Biennial Shohin Seminar

Friday, January 31 – Sunday, Feb 2, 2020



### Workshops

Bonsai masters, teachers, and enthusiasts from all over the country donate their time to this unique biennial event.



### Register

Registration options: Full registration or Day Pass



### Event Schedule

Discover the many demonstrations, workshops and events available.

Shohin photos on the CalShohin.org website graciously provided by [Jonas Dupuich](#).

# ANNUAL CLUB MEMBERSHIP

Individual Membership  
**\$25.00** per year

Family Membership  
**\$35.00** per year

Your dues enable the club to present activities such as our annual show, guest demonstrations, workshops, the *Dai Ichi Gazette*, club library, as well as refreshments and club raffles and events.

You can pay your dues in person at the next club meeting, or by mailing your check to:

**CJ Levinstein**

**827 East Marshall Place  
Long Beach, CA 90807**

Or pay online via PayPal:  
[daiichibonsaikai.com/membership](http://daiichibonsaikai.com/membership)

Registration is now open for the Shohin Seminar to be held in Santa Nella, CA. Forms are available at <http://www.calshohin.org>.



## IN THIS ISSUE

# 4

POTLUCK/BONSAI BINGO  
Holiday Party Coverage

# 11

ON THE BENCH  
Tips, Techniques, Advice

# 12

MASTERS SERIES WORKSHOPS  
Todd Schlafer & Jan Culek

# POT LUCK! BONSAI BINGO!

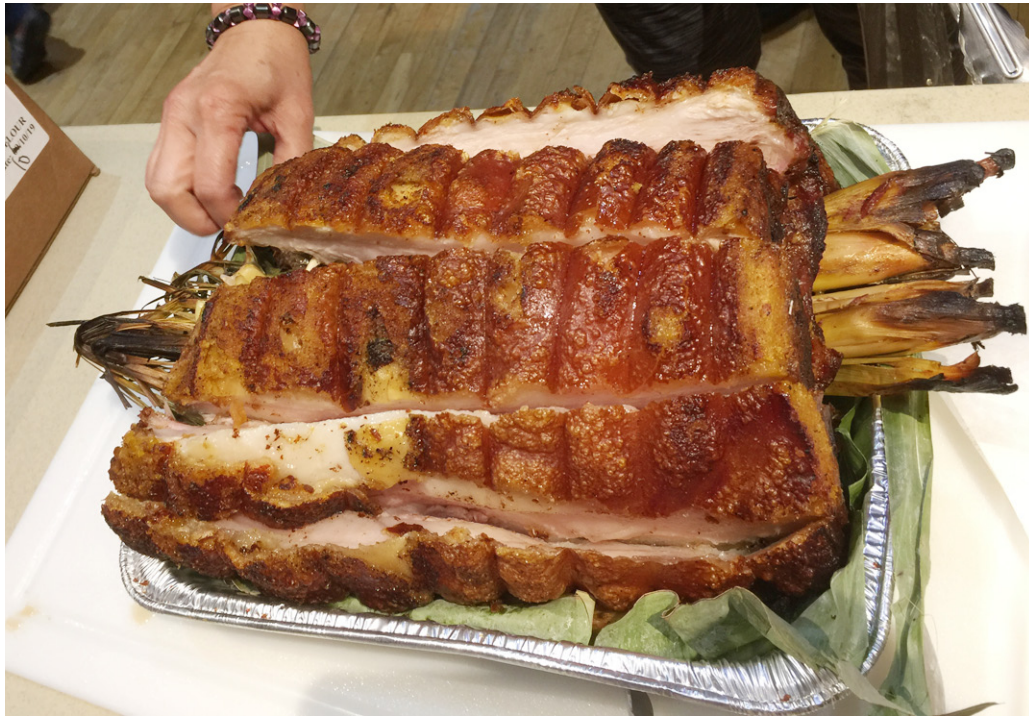
As in years past, DIBK held its annual holiday potluck party/bonsai bingo event at the October meeting. This year's party was well attended by members and friends, old and new. After munching on some really delicious food, brought in by club members, the crowd was treated to a rousing night of Bonsai Bingo. The game is your standard game of bingo with the exception that, instead of calling out letters and numbers, the card was filled with bonsai terms.

The night was a smashing good time thanks to the enthusiastic crowd and the generous DIBK members and friends that brought delicious foods and fantastic bingo prizes.





# DIBK ANNUAL POTLUCK **BONSAI BINGO**



Above:  
Soung Shin  
brought an  
amazing  
crispy roast  
pork to the  
feast!

Right:  
Shirley  
expertly  
carved the  
roast while  
Fred snuck  
a piece while  
no one was  
looking.

Busted!





# DIBK ANNUAL POTLUCK **BONSAI BINGO**



Much  
delicious!  
So much  
noms!



Seconds  
were a given!  
Thirds were  
a must!





# DIBK ANNUAL POTLUCK **BONSAI BINGO**



*With our tummies full, our Dai Ichi Bonsai Kai family were all smiles and ready to BINGO!*



# DIBK ANNUAL POTLUCK **BONSAI BINGO**





# DIBK ANNUAL POTLUCK **BONSAI BINGO**



Barry did an admirable job as our Bingo caller and he even pronounced some of the terms correctly! Good Job Bar!







Gabe won the collected Boxwood donated by Doyle.



Sean went home with this beautiful Japanese book donated by Gary Ishii/Chikugo-En Bonsai Nursery.



Shirley won this amazing grafted Kishu donated by Gary Ishii/Chikugo-En Bonsai Nursery.



Mia now owns the coolest Ivy in all the land, donated by Bob Pressler/Kimura Bonsai Nursery.

## BONSAI BINGO FOR YOUR CLUB!

Bonsai Bingo is an easy and fun activity to raise funds for your club! Unlike auctions and raffles, Bonsai Bingo is also a learning tool to teach enthusiasts traditional and horticultural bonsai terms.

The game is played like regular bingo, but instead of calling out letters and numbers, bonsai terms are called. You can provide the bingo cards to players for free (club sponsored) or charge what you wish for the cards (fundraiser). Prizes would be similar to any club raffle. You can play multiple games per card (multiple use) if you provide game markers. Hershey's Kisses make great markers. After the game is over, you eat the markers! One time use cards can be crossed off with pens or pencils.

To download a printable PDF file for your bonsai club or study group, click the link below. The file contains 20 different cards and will provide hours of learning fun for your club members and friends.

<http://www.daiichibonsaikai.com/2016/12/18/bbingo-download/>





# ON THE BENCH

TIPS • TECHNIQUES • ADVICE

By Doyle Saito

## Fall Bonsai Work

The weather here in Southern California is really unique in its diverse micro climates. I live 5 miles from the beach and it's normally cooler with fog, 10 miles east the temperature is hot and dry with Santa Ana winds blowing. Fall and then winter will find temperatures ranging from the 40's to even the high 90's. Our winter dormancy is very short and sometimes nonexistent. What to do?

Treat each type of tree differently. This is the time to defoliate your deciduous trees, most starting the process on their own, leaves are turning brown and some are dropping. We may have some cooler temps so you can wait and hope to get leaf color changes.

Black pines, now is the time to pull older needles and select which buds to keep. Pruning will let light and air into the canopy of the trees.

Junipers can be styled, and heavy bending, and pruning can be done as well. Thinning the foliage will allow light and increase the growth of new foliage. Here in SoCal junipers never really have a dormant season. Remember to turn your trees to take

into account the change of the sun's angle or move trees which need more sun into sunnier locations.

Finally, fertilization is key during this time. Use fertilizer that is Low in nitrogen and high in phosphorus and potassium to allow the trees to get ready for next year. Phosphorus promotes root growth and good flowering in the spring while Potassium promotes plant strength and helps in the process of photosynthesis. Feeding your trees now will encourage growth during the fall and winter and will result in better growth when spring comes around. Most organic fertilizers will be depleted in a 30 day time span, so feeding your trees one time will not do. Set up a monthly feeding plan and see what the coming year will bring.





# TODD SCHLAFER



**WORKSHOP** (Bring your own Tree)

**FRIDAY, NOVEMBER 15, 2019**

8am - TORRANCE

**\$125** (MEMBERS)

**\$150\*** (NON-MEMBERS)

\* Price includes DIBK membership for 2020.

**DEMONSTRATION**

**FRIDAY, NOVEMBER 15, 2019**

DAI ICHI BONSAI KAI NOVEMBER MEETING

7pm - KEN NAKAOKA CENTER, GARDENA

Todd Schlafer is a long time enthusiast who has been honing his skills under the direction of International bonsai master Ryan Neil of bonsai Mirai. Todd started his bonsai career under the tutelage of International bonsai master Harold Sasaki in Denver, Colorado.

An avid collector of Colorado *yamadori*, Todd runs a website called *First Branch Bonsai* where he sells some of his pre-bonsai collected trees. Todd's obsession with collecting trees started when Jerry Morris, another regular at Colorado Bonsai, invited him on a collecting trip to Utah. He learned very quickly that basic design principles did not necessarily apply to collected material with sparse foliage and unconventional branches. His study with Ryan focused on the advanced techniques of setting tree structure, which is the most difficult skill set to achieve in bonsai development and refinement. Todd pushed himself to become proficient in these techniques.

If you have any trees in development (especially *yamadori*) that you need expert styling on, don't miss your chance to get it from a world class bonsai artist. Seats are limited and available on a first come, first served basis so RSVP today by contacting Doyle Saito at (310) 940-0482 or email [doylesaito@yahoo.com](mailto:doylesaito@yahoo.com).



# JAN CULEK

**WORKSHOP** (Bring your own Tree or Rock Planting)

**SATURDAY, NOVEMBER 16, 2019**

9am - TORRANCE

**\$125** (MEMBERS)

**\$150\*** (NON-MEMBERS)

\* Price includes DIBK membership for 2020.

**DEMONSTRATION**

**SUNDAY, NOVEMBER 17, 2019**

10am - YAMAGUCHI BONSAI NURSERY  
WEST LOS ANGELES

Hailing from the Czech Republic, Jan Culek has been practicing bonsai since the age of ten. Jan has studied under Václav Novák, and has been intensively honing his bonsai techniques while earning his degree in art history, and painting and drawing. Jan specializes and is known for his handmade stones and slabs as well as the majestic *ishitsuki* plantings he creates with them.

Jan will be one of the main demonstrators at the European Bonsai Show in October, and he will be visiting us before heading up to Bonsai Mirai.

Seats are limited and available on a first come, first served basis so RSVP today by contacting Doyle Saito at (310) 940-0482 or email [doylesaito@yahoo.com](mailto:doylesaito@yahoo.com).







DAI ICHI BONSAI KAI

# SHOW YOUR DIBK COLORS



**T-SHIRTS**  
**\$15.00**



**APRONS**  
**\$25.00**

T-shirts are Glidden Ultra Cotton T-Shirts 2000 and available in men's size S, M, L, XL, XXL.  
Aprons are one size fits all with adjustable neck strap and three pockets.

*Pictures shown are for illustration purposes only. Actual products may vary.*

**AVAILABLE FOR PURCHASE AT OUR CLUB MEETINGS.**  
**ONLINE ORDERING COMING SOON!**





## TODD SCHLAFER NOVEMBER 15th, 2019

Todd Schlafer is a long time enthusiast who has been honing his skills under the direction of International bonsai master Ryan Neil of Bonsai Mirai. Todd started his bonsai career under the tutelage of International bonsai master Harold Sasaki in Denver, Colorado. An avid collector of Colorado *yamadori*, Todd runs a website called *First Branch Bonsai* where he sells some of his pre-bonsai collected trees.

Todd will be demonstrating advanced styling techniques and his demo tree will be included in the evening's raffle.

### UPCOMING

All events are tentative and subject to change.

DECEMBER 2019 | **NO MEETING**  
*HAPPY HOLIDAYS!*

JANUARY 2020 | **ALBERT RIVERA**  
*Shimpaku Grafting*

## EVENTS

### December 1, 2019 California Bonsai Society Sale

Yamaguchi Bonsai Nursery  
1905 Sawtelle Boulevard  
Hours: 9 AM – 1 PM  
A variety of material will be on sale from CBS members. NO SALES BEFORE GATE OPENS.

**Dec 26 – 30, 2019**  
**California Aiseki Kai 28th Annual Show**  
The Huntington Library and Botanical Gardens  
1151 Oxford Road, San Marino  
Suiseki Exhibition  
Hours: 10:00 AM – 5:00 PM  
For more information, visit:  
[www.aisekikai.com](http://www.aisekikai.com)

**January 18 - 19, 2020**  
**Baikoen Bonsai Kenkyukai**  
**56th Annual Winter Silhouettes Show**  
Arboretum of Los Angeles  
310 North Baldwin Avenue, Arcadia  
Hours: 10:00 AM – 4:30 PM  
Exhibit, sales area, reception, raffle and auction.  
For more information:  
Ken Teh: [kenwteh6@gmail.com](mailto:kenwteh6@gmail.com)  
or visit [www.baikoenbonsai.com](http://www.baikoenbonsai.com)

**January 31 - February 2, 2020**  
**17th Annual Shohin Seminar**  
Hotel Mission DeOro  
13070 S Highway 33, Santa Nella  
Hours: 10:00 AM – 4:30 PM  
Exhibit, sales area, Saturday night reception  
For more information:  
<http://www.calshohin.org>

**February 22 - 23 2020**  
**Bonsai-A-Thon XXIII**  
The Huntington Library and Botanical Gardens  
1151 Oxford Road  
Hours: 8:00 AM – 4:30 PM  
For more information visit:  
[www.gsbfhuntington.com](http://www.gsbfhuntington.com)

For more event information, please visit  
[bit.ly/GSBF-MoreEvents](http://bit.ly/GSBF-MoreEvents)

## GRATITUDE

*Thank you to all of the members who contributed.  
The club truly appreciates your generosity and giving spirit.*

### Bonsai Bingo Contributors

Gary Ishii/ChikugoEn Bonsai Nursery,  
Bob Pressler/Kimura Bonsai Nursery, Doyle Saito,  
Jason Saito, Allan Sugimura, John Magana,  
Kusumi Family, Shirley Floresca, Joyce Gibb,  
Dan Sawada, Tom Vuong, Joan Shiosaki, Richard  
Offord, David Hazard, Gabriel Gonzales,  
Louis Carrillo, Keven Sweeney, Sean Campbell,  
and everyone else who donated an item to the  
Bingo event.

### Refreshment Contributors

John Magana, Jason Saito, Allan Sugimura,  
Fred Floresca, Joan Shiosaki, Dan Sawada  
Tom Vuong, Hanah Nguyen, Lisa Kashiyama,  
Debra & David Melitz, Steve Ettinger  
Louis Carrillo, David Hazard, Joe Ortega,  
and everyone else who brought in  
a yummy dish!

### Refreshment Signup for November

*Please feel free to bring your favorite treat and remember to sign the contribution sheet  
so that we may acknowledge your generosity.*

### Special thanks to

Friends and members of Dai Ichi Bonsai Kai  
for their contributions to this issue of the DIBK Gazette.

## ABOUT DAI ICHI BONSAI KAI

Dai Ichi Bonsai Kai ("Number One" Bonsai Club) was established in January, 1986.

Our club is dedicated to promoting the art of bonsai, and takes great pride  
in its family-oriented character.

The club meets on the third Friday of each month at the Ken Nakaoka Community  
Center, 1670 W. 162nd St., Gardena, at 7:00 P.M. Each meeting features a bonsai  
demonstration, benefit drawing and the public is welcome.

[www.daiichibonsaikai.com](http://www.daiichibonsaikai.com)

***Please feel free to forward this publication to friends, family  
or anyone with an appreciation for bonsai.***

Do you have any comments, questions, or submissions? If so, please contact:  
**Jason Saito** ph 310.909.4598 | email [jason@zenpalace.com](mailto:jason@zenpalace.com)