

APRIL 2020 | VOLUME 35, ISSUE 4



DAI ICHI BONSAI KAI

Serenity through Bonsai

第一分盆栽會
盆中平穩

THE DAI ICHI GAZETTE



PRESIDENT'S MESSAGE



DAI ICHI BONSAI KAI

Serenity through Bonsai

I hope everyone is well and staying safe. Due to the current Covid-19 pandemic, we find ourselves in a very sad time in history with everyone having to distance themselves from each other, yet trying to stay connected to friends and family. Our only means of connection is to reach out by phone, email, text and social media to let the people who matter to us know that we are fine and that we care.

That being said, I would like to tell all of our members and friends that if there is anything you need, just give me a call. If you need help with a bonsai project let me know and I will assist you all I can.

Since all bonsai club meetings and shows have been cancelled for the next three months, this gives everyone time to work on their trees. The unfortunate timing of the lockdown means our annual show & sale has to be cancelled. We could possibly reschedule our actual DIBK Show & Sale for later in the year, but that would depend on our members' wishes, so let us know what you think. Should we reschedule the show?

In the meantime, if you're starving for bonsai knowledge, professionals and novice bonsai artists are beginning to post demonstrations and garden tours via Facebook and YouTube. Our friends at Baikoen Bonsai Kenkyukai has started featuring tours of their members' gardens, and artists like Ryan Neil and Bjorn Bjorholm regularly post demonstrations on their respective YouTube channels. Now would also be a good time to revisit previous DIBK demonstration videos on our Facebook page.

Stay safe and I look forward to seeing you all soon!



Doyle Saito
President
Dai Ichi Bonsai Kai

Time to Renew Your Annual Club Membership!

Individual Membership
\$25.00

Family Membership
\$35.00

Your dues enable the club to offer resources and benefits such as:

- Monthly demonstrations
- Monthly members workshops
- Access to our club library
- Benefit draw raffles
- Annual show and sale
- Subscription to our award winning newsletter *the Dai Ichi Gazette*.

You can pay your dues in person
at the next club meeting,
or by mailing your check to:

CJ Levinstein
827 East Marshall Place
Long Beach, CA 90807

Or pay online via PayPal:

daiichibonsaikai.com/membership

EDITOR'S MESSAGE

Due to the current Covid-19 pandemic the world is experiencing, pretty much all bonsai events have been cancelled throughout the world. Every single person on this planet has been affected by it, and it will take strong measures, such as shelter in place, to overcome this unprecedented event.

That being said, *the Dai Ichi Gazette* will suspend coverage of club and local events for the foreseeable future. We look forward to the time when we can, once again, gather and celebrate bonsai. Until then, we will revisit previous club events, as well as feature news and events from around the web.

Stay safe everyone!

Live. Love. Grow.

Jason Saito
Jason Saito



DAI ICHI BONSAI KAI

2020 BOARD OF DIRECTORS

Doyle Saito
President
Program Chair

Jason Saito
1st Vice President
Show Chair

Fred Floresca
2nd Vice President

CJ Levinstein
Membership Chair
Treasurer

Joan Shiosaki
Corresponding Secretary

Shirley Floresca
Fundraising Chair

Carol Takahashi
Librarian

Kevin Sweeney
Benefit Drawing Chair

Barry Miller
Hospitality
Club Photographer

Dan Sawada
Publicity

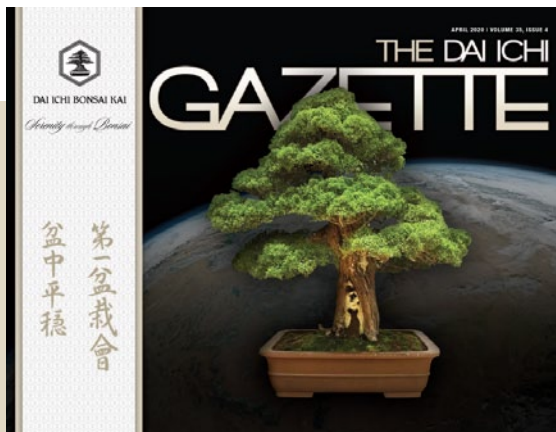
Michael Izumoto
Website / Social Media

OPEN
Recording Secretary
Historian
Newsletter Editor

CLUB FOUNDERS

Leila Kusumi
Co-Founder | Sensei

Jim Tatsukawa
Co-Founder | Sensei



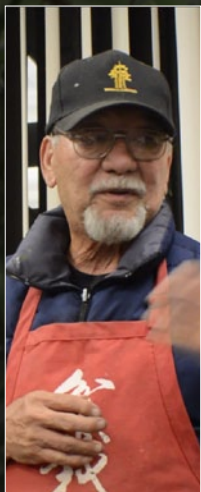
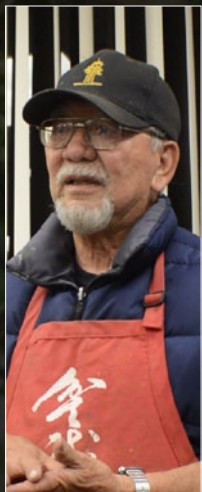
IN THIS ISSUE

4
FRED MIYAHARA
Repotting Demo

7
THE DIRT ON REPOTTING
Repotting Workshop

14
CBS ONLINE EXHIBITION
World Day Celebration Exhibition

15
AROUND THE WEB
Repotting Links



Fred Miyahara repotting article
reprinted from *the DIBK Gazette*, March 2015

*“Michael used to
be my student, and now
he is my teacher.”*

*“...these techniques work for us
and they work for people in Japan, and
they have trees that are
over 500 years old.
If it works for them, we should try
to emulate their techniques instead of
reinventing the wheel.”*



FRED MIYAHARA

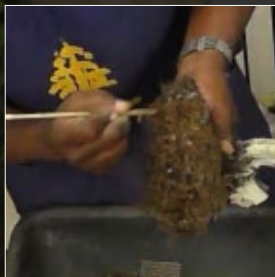
REPOTTING TECHNIQUES

As part of DIBK's ongoing educational mission, we were fortunate to have Fred Miyahara and Michael Sykes, demonstrate repotting techniques on established bonsai.

The demonstration started out with Fred discussing fundamentals and philosophy. Fred explained, “One thing we tend to do is overpot our trees. People notice that trees from Japan are usually in very small pots and by comparison, in Southern California, and perhaps even the entire US, we tend to use larger pots. My hypothesis is that at some point, people started using larger pots and were repotting less often. With larger pots and infrequent repotting, the roots tend to grow very long, so the fine feeder roots get cut too much. That's not how to keep a bonsai happy. I think the secret to healthy trees is to repot often. Deciduous trees should be repotted every year and no longer than two years. The roots grow out, you cut it back, keep repeating this and the tree stays alive and healthy for a hundred years.”

According to Fred and Michael's teacher, Kenji Miyata, the most important thing in bonsai is watering. Fred explains, “This is probably true because in Japan, no apprentice can water until their third year. Apprentices may wire and prune, but must first learn how the tree's roots grow, before being allowed to take on the responsibility of watering. The second most important thing is repotting.

“Here, we tend to pay more attention to what is above the ground. In Japan, they concentrate on everything below the ground. If you take care of everything below the ground everything will take care of itself.”



At this point, Fred let Michael masterfully demonstrate a repot of a grafted Kishu.

“Our first step is getting the tree out of the pot using sickles, saws, and other root pruning tools. It’s a very simple process that we use. We start combing out the top, to see where the viable roots are. You can’t cut the bottom until you know how much rootball you have on top. If you cut too much off the bottom and don’t have enough roots on top, you will have a problem, especially when putting it in a shallow pot. As

you comb through the roots, you shape the top into a conical pyramid. This allows water to easily drain down into the pot.

“When we repot, we do use a drainage layer. coarser soil on the bottom allows the roots to ‘air prune’ themselves, which leads to better drainage, which is beneficial for health and growth.

“If you look at the root system, it mirrors the top of the tree. We know how the top of the tree grows; the top branches are the strongest and most vigorous, the bottom branches are the

weakest. If you take the top part of the tree and turn it upside down, the root system mirrors the top of the tree. Meaning the roots on the bottom are the most vigorous, and the roots on the top, the weakest. It is exactly the same. You also want to take the biggest roots out of the bottom, because the fine feeder roots are what feeds the tree.

“You also want to tie the tree down well, because it’s critical as the rootball starts to grow, that the tree and the roots not move. If it moves, it will

break the newly formed roots, and that will set the growth back. While you can remove the wire after a year or so, I almost never cut my wire out. Only in fast growing deciduous and tropical trees, do I sometimes remove the wire; because the roots grow so fast, otherwise, I just leave them in until the next repot.”



Kishu grafted onto San Jose stock over 20 years ago. After repotting.



Fred's Soil Mix Recommendations

“I’ve switched from pumice to perlite as pumice tends to be powdery and it retains a lot of dust and turns to sludge. Perlite is sterile, clean, and leaves no dust.”

Pines

7 parts Akadama
2 parts Perlite
1 part Lava (Scoria)

Junipers

8 parts Akadama
2 parts Perlite or Pumice
1 part Lava (Scoria)

Deciduous

9 parts Akadama
2 parts Perlite

"To finish off the repot, we take fine sifted sphagnum moss, or very fine soil, and spread a thin layer over the tamped down topsoil. This holds moisture in as well as protecting the fine roots that are close to the surface. You can also mix bamboo charcoal dust into the top dressing. It must be organic and wood based. This helps filter the water, and also helps change the organic compound of the soil. There was a study in South America, where they found that in areas where wood was burned often, the soil was very rich and fertile. They determined this was due to the high charcoal content in the soil.

"After the repot, you can fertilize within two weeks if you use organic fertilizer. If you use chemical fertilizer, you must wait at least a month and a half. You need to be real careful with fertilizers.

"The first watering, you should run water over the soil until it runs clear through the bottom. This ensures that all of the fine soil and debris is gone.

"I'm just trying to teach you what we've learned, how we do things and what works for us. It is not gospel. All of these techniques work for us and they work for people in Japan, where they have trees that are over 500 years old. If it works for them, we should try to emulate their techniques instead of reinventing the wheel."

At this point, the club got some hands on experience by repotting a few trees Fred brought with him. With the guidance of the demonstrators, as well as senior club members, participants repotted these trees.

Thanks to Fred and Michael for making the long journey from San Diego, to generously educate our club members.

To see Fred Miyahara demonstrate grafting techniques, please check out Bonsai Artisans video:

<https://www.youtube.com/watch?v=bG1vZzEhn-w>





Reprinted from *the DIBK Gazette*, April 2017

THE DIRT ON REPOTTING

Our March meeting was a potting workshop with longtime DIBK supporters Fred Miyahara, and Michael Sykes. They both endured the long drive from San Diego to share their wisdom with our club. The meeting was well attended, and many member trees are now ready for summer and new growth!



Fred Floresca getting to the root of the matter...



Michael Sykes talks wire...



and potting options...



Shirley Floresca taming an unruly Olive...



It can seem like a lot of work to bring your material, tools, soil, and pots to a workshop, but the end results are worth it. More importantly is the knowledge you go home with, that will benefit you long after the workshop is over.

Learning proper techniques like root prep, soil composition, best time to repot, maintenance and aftercare is invaluable, and having two great teachers with years of experience is the best way to learn.



Fred Miyahara working the roots of Glen Takahashi's Juniper...



Glen watches intently as Fred explains the root prep process...



Discussing root work with Glen and Carol...





Michael Izumoto and Michael Sykes (Mike²) adjusting the planting angle....



Fred weighs in on Michael's pot selection...



As did Michael...



"Now mom can have her strainer back!"
~Michael Izumoto



"Keep it."
~Michael's mom



Root combing...
pick pick pick...
poke poke.



Getting the angle just right...



Approved!



Liz Do showing Doyle
how it's done...

as Phillip watches...



Kevin Sweeney's
All-American bonsai...

Peter Macasieb and CJ Harmatz chatting about life, love and bonsai...



John Monos and John van de Wouw hangin'...



Ivan Salas preparing to
WIN ALL THE
RAFFLE!



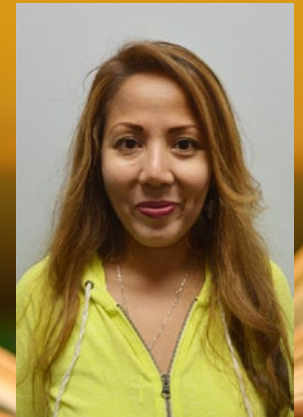
Allan Sugimura and Marisa Macasieb catching up...



CLUB LIBRARIAN

Please welcome DIBK's newest club librarian, Carol Takahashi. Carol will be in charge of our collection of printed and digital media archives. From time to time, she will also be writing feature book reviews for the *DIBK Gazette*, and that book (along with a small selection) will be available for loan at the next monthly meeting.

Books from our library are available to club members in good standing. Check out the library at www.daiichibonsaikai.com/media/library and let Carol know which books you want to check out!



CALL FOR ENTRIES

CBS WORLD BONSAI DAY CELEBRATION EXHIBITION



EXHIBITION OPENS MAY 1
<https://bit.ly/cbs-wdc>

Deadline for Entries: May 9, 2020

For Submission Criteria and More Information:
CaliforniaBonsaiSociety.com



CALIFORNIA BONSAI SOCIETY

California Bonsai Society in celebration of World Bonsai Day is sponsoring a world wide Facebook Bonsai exhibition from May 1, 2020 through May 9 2020-World Bonsai Day.

Since many of the bonsai exhibits around the world have been canceled this spring we decided to conduct a world wide exhibit on the California Bonsai Society World Bonsai Day Exhibition Facebook Page. <https://bit.ly/cbs-wdc>

Everyone is invited to post a photo of one or more of your show quality trees. If possible bonsai should be displayed in front of a solid background. This is an exhibition so let's have those trees on display tables and with accent plants where practical. This may be the only chance this year to really show off our best bonsai.

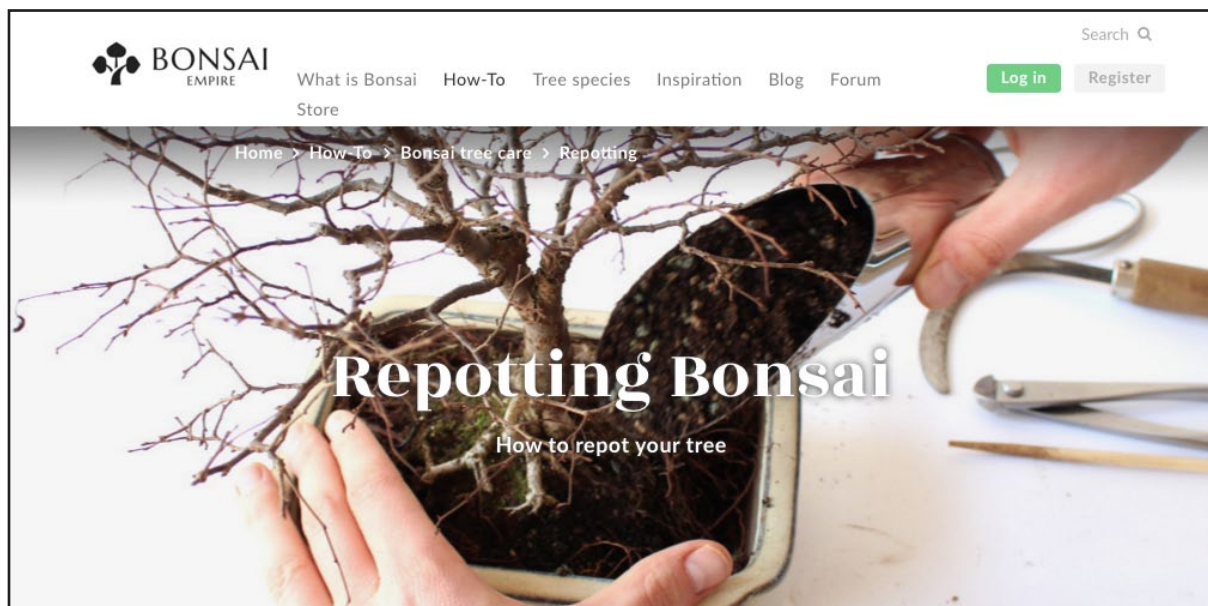
This exhibit is open to anyone that wants to show a bonsai (please no trees in training) to a huge audience.

All submissions should be posted on the Facebook page by creating a new post for each tree. Posts should include one photo of the bonsai from the front with a solid backdrop. Ideally on a display stand with appropriate accent. Name of tree species and name and country of artist.

The top 10 trees and artists as determined by likes from page visitors will be featured on the CBS website, Facebook page and Instagram page.

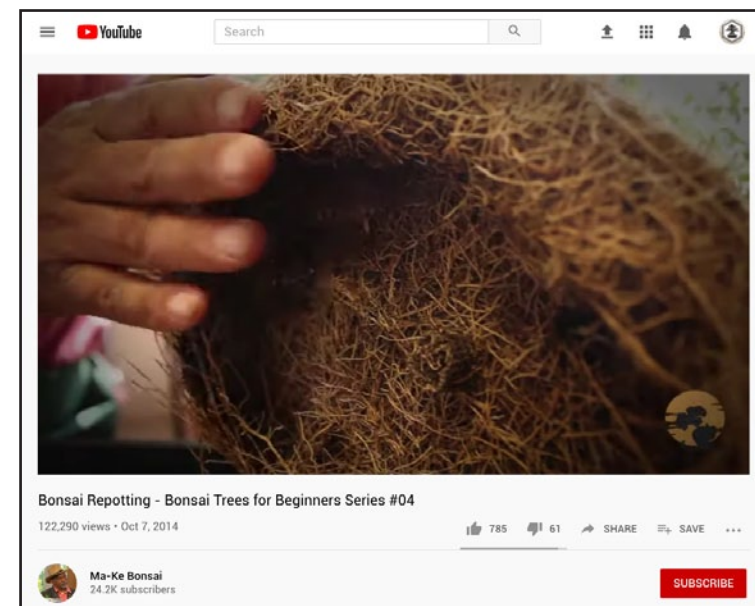
Entries can be posted starting May 1 with cut off being 9pm May 9th pacific time. Any inappropriate entries will be deleted by admins.

BONSAI EMPIRE REPOTTING ARTICLE



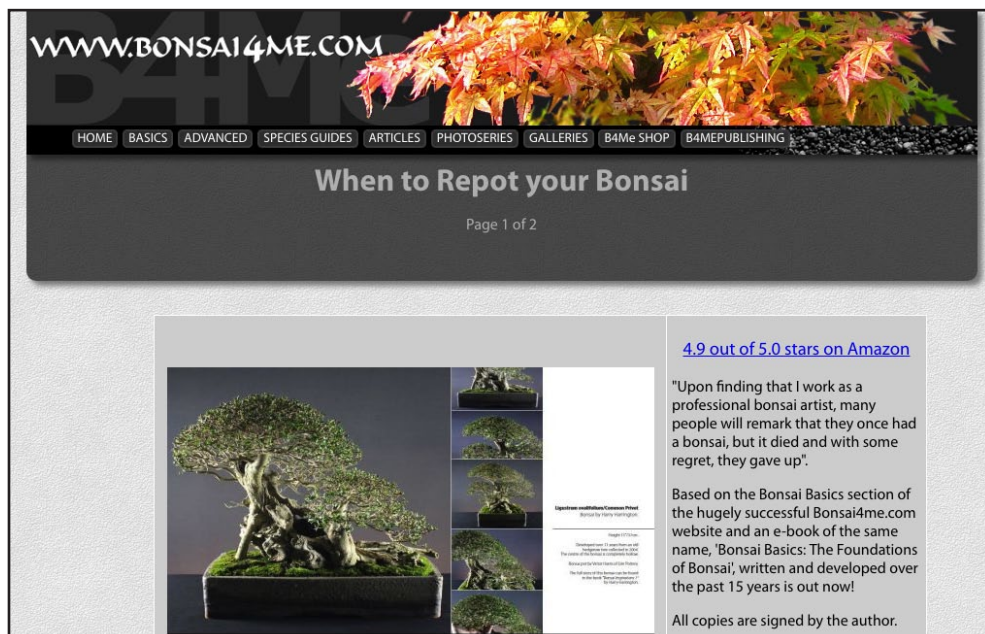
<https://www.bonsaiempire.com/basics/bonsai-care/repotting>

MA KE BONSAI REPOTTING VIDEO



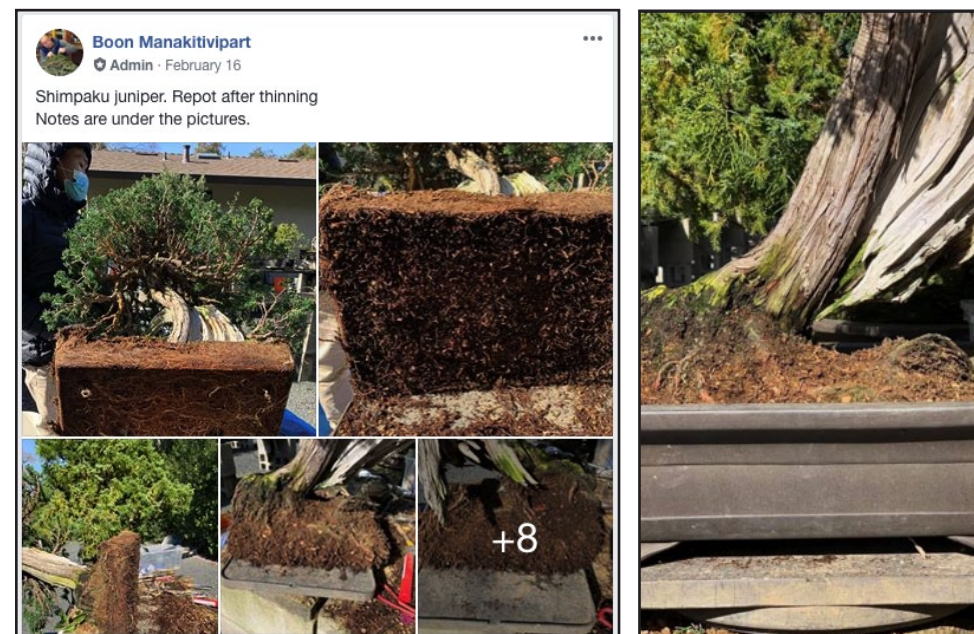
https://www.youtube.com/watch?v=JRsWm_GYyul

BONSAI4ME WHEN TO REPOT ARTICLE



<http://www.bonsai4me.com/Basics/BasicsWhen%20to%20Repot%20your%20Bonsai.htm>

BONSAI BOON REPOTTING PICTORIAL POST (FACEBOOK)



<https://www.facebook.com/groups/685141798229107/permalink/2690297224380211/>